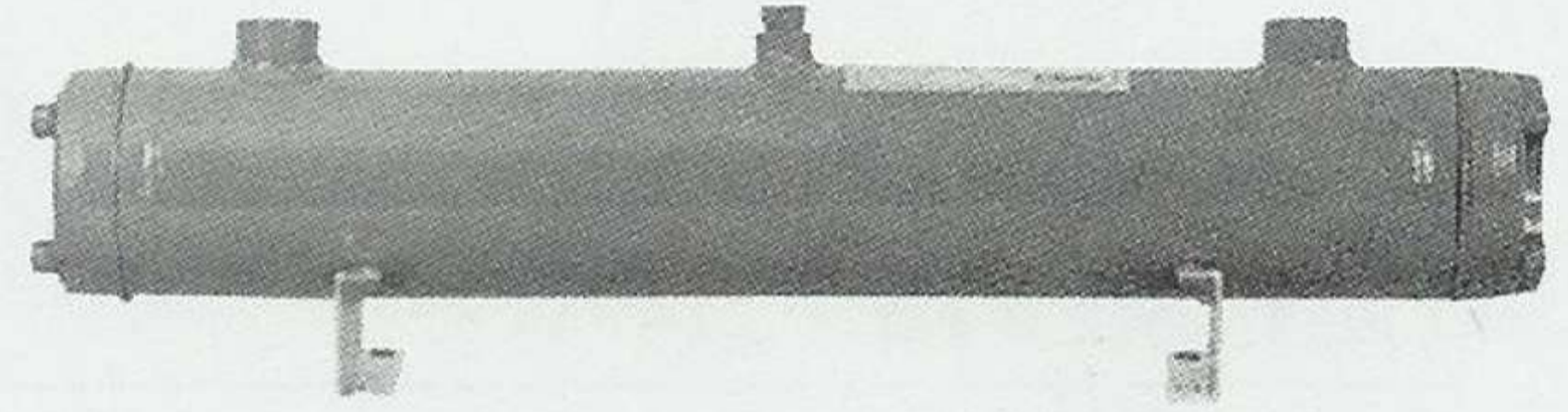
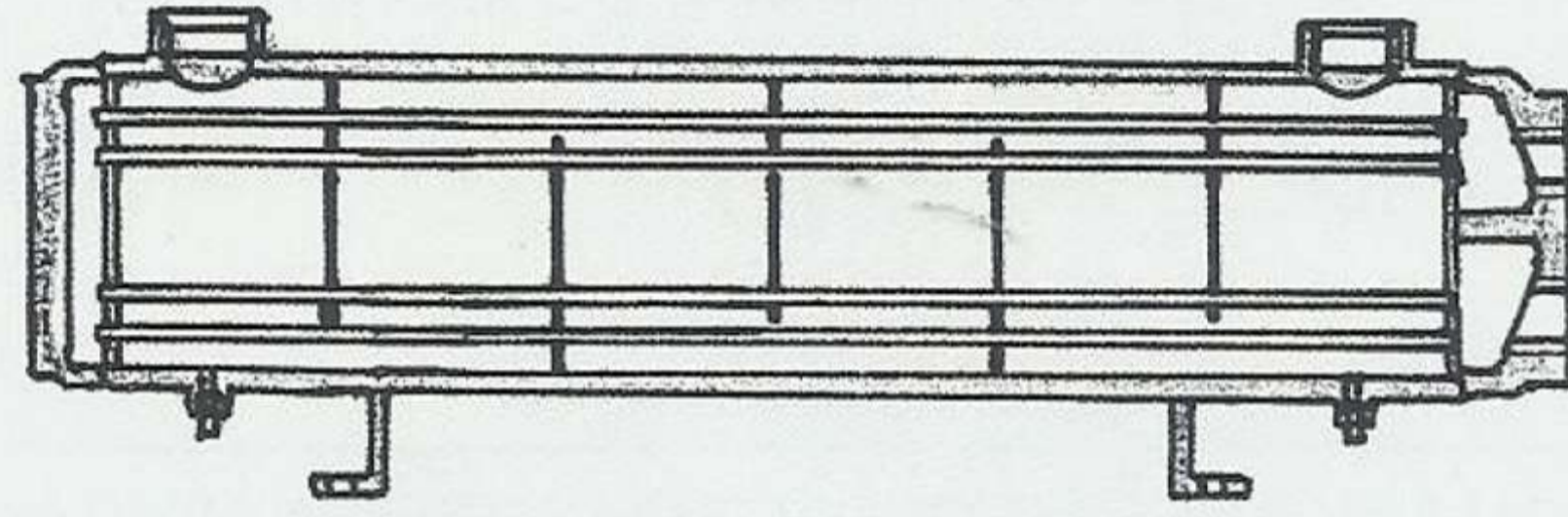
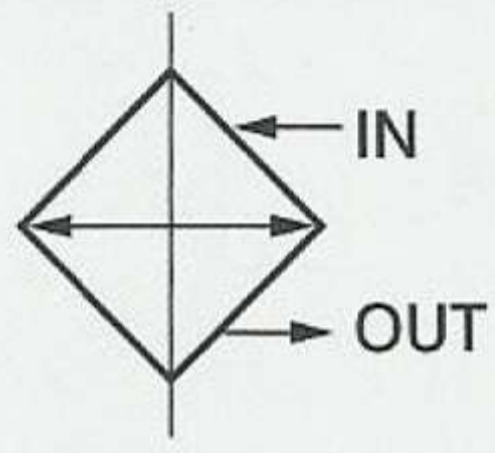


FIN TUBE TYPE OIL COOLER NO-FIN TUBE TYPE OIL COOLER



How to order

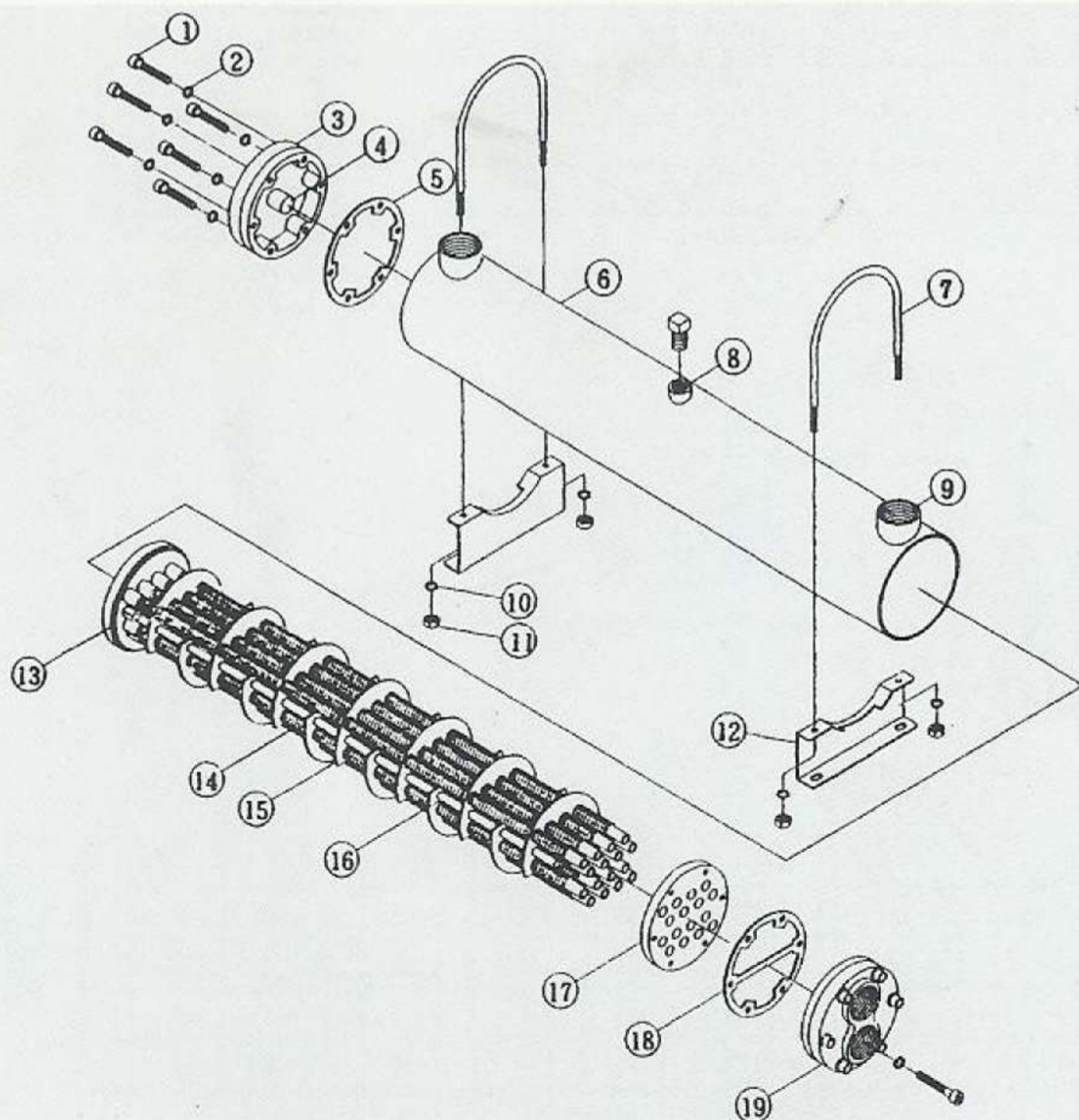
HT, HH - 14 05 - ✖
1 2 3 4

1	Model	HT: Fin tube type	HH: No-Fin tube type	HTF: Fin tube type	HHF: No-Fin tube type
2	Shell outside diameter				
3	Tube length				
4	Cooling water	None: Water(standard type)	B: Brine water		

Specifications

Model	Heat Diffusion Area(m ²)		Flow (lpm)	Weight(kg)		Model	Heat Diffusion Area(m ²)		Flow (lpm)	Weight(kg)	
	HT(F)	HH(F)		HT(F)	HH(F)		HTF	HHF		HTF	HHF
HT,HH-0905	0.41	0.24	60	10	10	HTF,HHF-2508	8	3.55	1000	100	130
HT,HH-0908	0.7	0.39	100	14	14	HTF,HHF-2512	12.2	5.41	1600	146	170
HT,HH-1405	1.1	0.54	150	20	20	HTF,HHF-2516	16.4	7.21	1800	168	190
HT,HH-1408	1.9	0.84	250	25	26	HTF,HHF-2522	20.8	9.08	2200	260	300
HT,HH-1412	2.9	1.28	350	37	35	HTF,HHF-3008	13.3	7.3	1400	167	168
HT,HH-1712	4.6	2.17	600	48	50	HTF,HHF-3012	20	11	2100	204	206
HT,HH-1716	6.5	2.89	840	56	60	HTF,HHF-3016	26.6	14.7	2800	241	242
HT,HH-1722	7.2	3.63	1000	72	72	HTF,HHF-3022	33.4	18.5	3500	280	283
HTF,HHF-2208	5.6	2.61	800	72	78	HTF,HHF-3508	15.5	9	1640	222	224
HTF,HHF-2212	8.6	4.02	1200	93	110	HTF,HHF-3512	23.6	13.7	2500	264	268
HTF,HHF-2216	11.6	5.39	1500	118	130	HTF,HHF-3516	31.5	18.1	3300	306	311
HTF,HHF-2222	14.6	7.15	1800	260	290	HTF,HHF-3522	39.6	22.8	4400	348	357

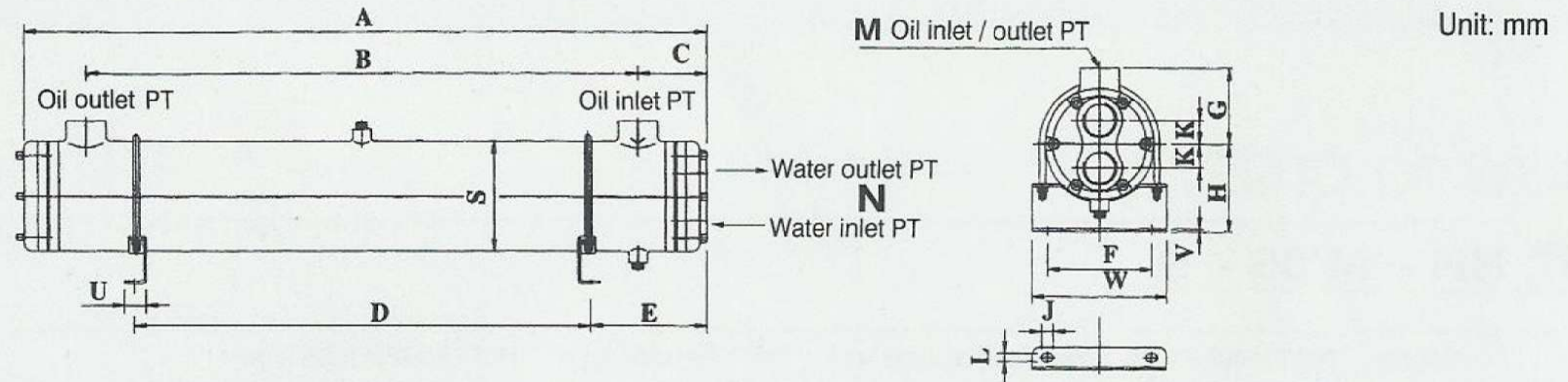
Dimensions



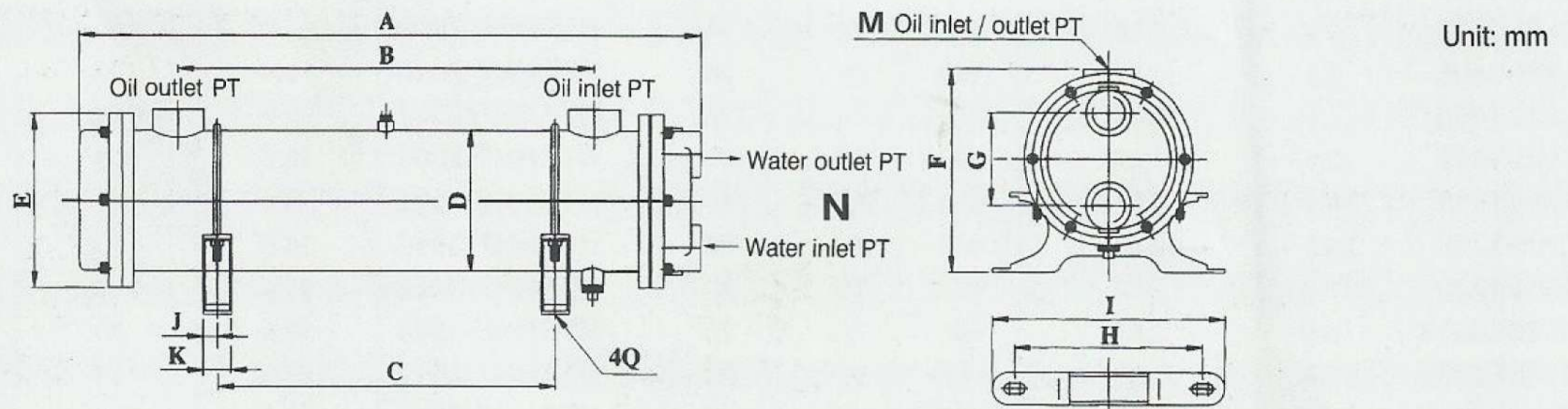
Item	Part name	Material
1	Socket cap screws	SCM (435)
2	Washers	SPM
3	Cast iron end cover	FC20
4	Anti-corrosion zinc bar	ZnB
5	Oil seal	NBR
6	Shell	BPE
7	Supporting hangers	AISI (1006)
8	Air vent	SS41
9	Oil port	STPG (370)
10	Vibration absorber	FWL
11	Nut	STEEL
12	Supporting legs	SS41
13	Tube end plate	SS41
14	Copper tubes	JIS (H3300) (1220T)
15	Baffle plates	SS41
16	Supporting rod	SS41
17	Tube bundle end plate	SS41
18	Oil seal	NBR
19	Cast Iron end cover	FC20

FIN TUBE TYPE OIL COOLER NO-FIN TUBE TYPE OIL COOLER

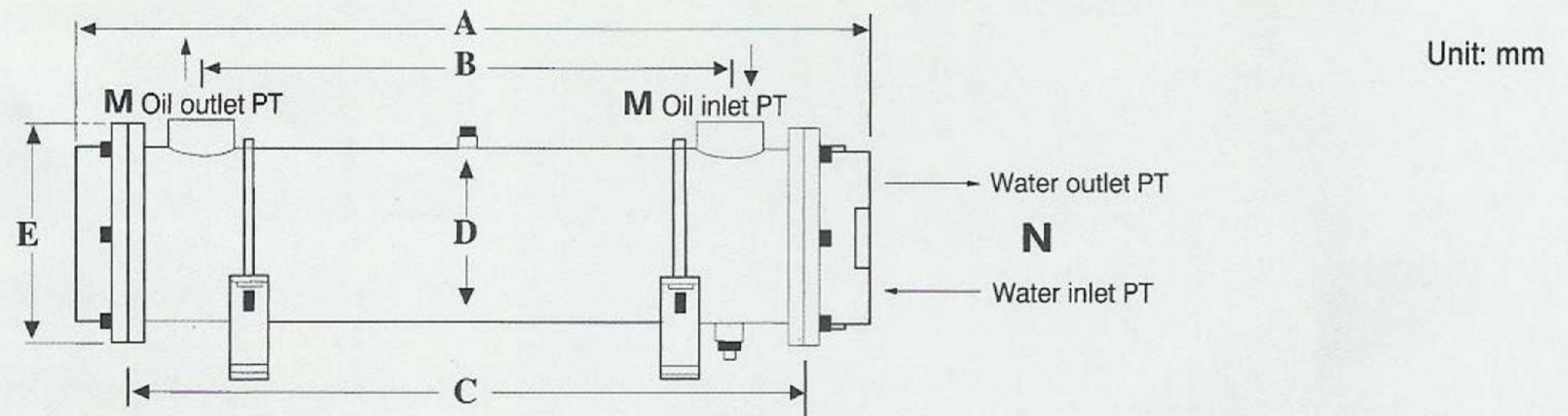
Dimensions



Model	A	B	C	D	E	F	J	G	H	K	L	M	N	S	U	V	W
HT,HH-0905	590	408	88	270	150	80	25	63	80	22	10	3/4"	3/4"	89.5	30	2.3	115
HT,HH-0908	880	720	78	500	190	80	25	63	80	22	10	3/4"	3/4"	89.5	30	2.3	115
HT,HH-1405	600	398	100	270	162	140	32	90	110	28	12	1-1/4"	1/1/4"	140.8	40	3.2	176
HT,HH-1408	890	710	85	500	202	140	32	90	110	28	12	1-1/4"	1-1/4"	140.8	40	3.2	176
HT,HH-1412	1310	1110	100	700	303	140	32	90	110	28	12	1-1/2"	1-1/4"	140.8	40	3.2	176
HT,HH-1712	1335	1060	138	700	310	145	32	115	125	32	12	2"	1-1/4"	166.5	40	3.2	200
HT,HH-1716	1745	1510	118	850	460	145	32	115	125	32	12	2"	1-1/4"	166.5	40	3.2	200
HT,HH-1722	2200	1850	160	1650	270	145	32	115	125	32	12	2	1-1/4"	166.5	40	3.2	200



Model	A	B	C	D	E	F	G	H	I	J	K	M	N	Q
HTF,HHF-2208	950	640	ADJ.	219	265	323	137	290	360	38	50	2"~2-1/2"	1-1/2"~2"	5/8"
HTF,HHF-2212	1370	1060	ADJ.	219	265	323	-	-	-	-	-	2"~2-1/2"	1-1/2"~2"	5/8"
HTF,HHF-2216	1780	1490	ADJ.	219	265	323	-	-	-	-	-	2"~2-1/2"	1-1/2"~2"	5/8"
HTF,HHF-2222	2210	1860	ADJ.	219	265	323	-	-	-	-	-	2"~2-1/2"	1-1/2"~2"	5/8"
HTF,HHF-2508	980	640	ADJ.	270	325	385	160	345	405	38	50	2"~3"	2"	5/8"
HTF,HHF-2512	1400	1060	ADJ.	270	325	385	160	345	-	-	-	2"~3"	2"	5/8"
HTF,HHF-2516	1810	1470	ADJ.	270	325	385	160	345	-	-	-	2"~3"	2"	5/8"
HTF,HHF-2522	2240	1860	ADJ.	270	325	385	160	345	-	-	-	2"~3"	2"	5/8"



Model	A	B	C	D	E	M	N	Model	A	B	C	D	E	M	N
HTF,HHF-3008	975	635	810	12"	390	3"~4"	3"~4"	HTF,HHF-3508	975	635	810	14"	448	3"~4"	3"~4"
HTF,HHF-3012	1400	1060	1235	12"	390	3"~4"	3"~4"	HTF,HHF-3512	1400	1060	1235	14"	448	3"~4"	3"~4"
HTF,HHF-3016	1810	1470	1645	12"	390	3"~4"	3"~4"	HTF,HHF-3516	1810	1470	1645	14"	448	3"~4"	3"~4"
HTF,HHF-3022	2235	1895	2070	12"	390	3"~4"	3"~4"	HTF,HHF-3522	2235	1890	2070	14"	448	3"~4"	3"~4"